

# KNITTED HORTICULTURAL FABRICS



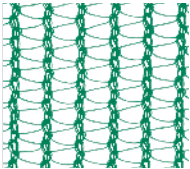
Being an Australian brand, Polyfab understands Australian conditions and as a result, has created high-quality industrial, agricultural, and horticultural textiles and fabrics. Products like Covershade® is UVR stabilised to maintain its strength and flexibility under the harsh Australian sun.



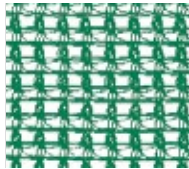
## Polyfab Covershade®

Covershade® is a high quality knitted shade cloth designed for horticultural and agricultural covers, as well as general purpose protection for livestock and equipment. It can also be used for scaffold covers, site screenings, wind break protection or car protection. There are four different weights of fabric, all manufactured from UVR-stabilised high-density polyethylene yarn.

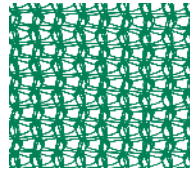
Extra Light



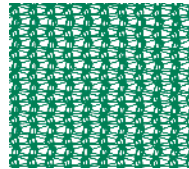
Light



Medium



Heavy



### FEATURES & BENEFITS

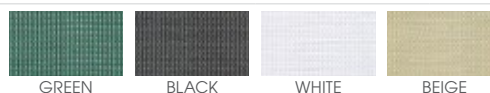
- UVR stabilised
- 10 year Ultra Violet (UVR) Protection warranty
- Australian standard AS4174.1994.
- 100% recyclable

The designation of the fabrics correlates closely with those in Australian Standard AS 4174 – 2018 “Knitted and Woven Shade Fabrics”, Section Two “Horticultural Shade Protection Fabrics”. The physical parameters outlined in the “Product Specification” below, i.e. Strength, Tear Resistance, and Bursting Force, well and truly exceed the minimum requirements outlined in that standard. High-density polyethylene is readily recyclable and the products are free of heavy metals.

| PRODUCT SPECIFICATION  | EXTRA-LIGHT | LIGHT     | MEDIUM     | HEAVY      |
|--|-------------|-----------|------------|------------|
| <b>Weight (gsm)</b>  | 90          | 170       | 200        | 260        |
| <b>Shade Factor (%)</b>  | 26 - 34     | 50 - 56   | 64 - 70    | 74 - 80    |
| <b>Breaking Force (AS 2001.2.3.1-2001) Warp / Weft (N/50 mm)</b> | 340 / 390   | 520 / 960 | 520 / 1200 | 570 / 2400 |
| <b>Tear resistance (AS 2001.2.10-1986) Warp / Weft (N/50 mm)</b> | 69 / 49     | 103 / 109 | 94 / 137   | 112 / 212  |
| <b>Bursting Force (AS 2001.2.10-1986) (N)</b>                    | 704         | 1230      | 1403       | 1720       |

### COLOURS AVAILABLE AND ROLL DIMENSIONS

| PRODUCT     | COLOURS | Roll Width (cm) and Length (m) |          |          |
|-------------|---------|--------------------------------|----------|----------|
|             |         | 183 x 50                       | 366 x 50 | 610 x 50 |
| Extra-Light | Green   | -                              | ✓        | -        |
|             | Black   | -                              | ✓        | -        |
| Light       | Green   | ✓                              | ✓        | -        |
|             | Black   | ✓                              | ✓        | -        |
|             | White   | ✓                              | ✓        | ✓        |
| Medium      | Green   | ✓                              | ✓        | -        |
|             | Black   | ✓                              | ✓        | -        |
|             | White   | ✓                              | ✓        | -        |
|             | Beige   | ✓                              | ✓        | -        |
| Heavy       | Green   | -                              | ✓        | -        |
|             | Black   | -                              | ✓        | -        |



GREEN

BLACK

WHITE

BEIGE